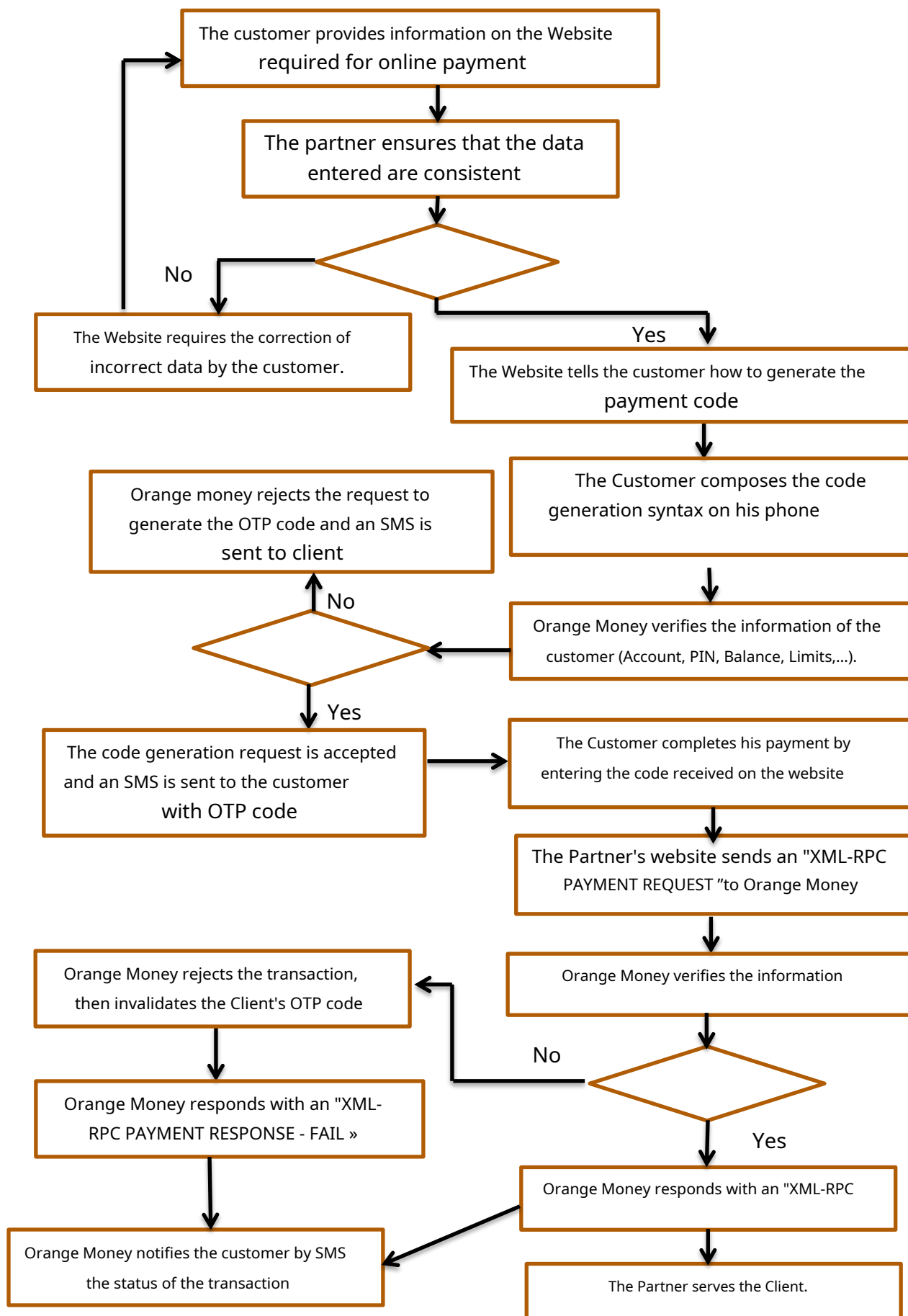


Customer journey and technical specifications**TO. Customer journey for online payments:**

## B. Online payment specifications

The Online Payment Service allows merchant sites to couple an online payment engine. Each merchant site must be created in the Orange Money platform with a unique telephone number (MSISDN). This unique number, in addition to confidential identifiers, will be transmitted by the website with each payment in the XML tag **merchant\_msisdn**.

### 1. Test platform:

- **Url:** <https://testom.orange.bf:9008/payment>
- **Short code generation OTP:** [\\* 866 \\* 4 \\* 6 \\* amount #](#)

### 2. Production Platform:

- **Url:** <https://apiom.orange.bf:9007/payment>
- **Short code generation OTP:** [\\* 144 \\* 4 \\* 6 \\* amount #](#)

### Example request: XML-RPC REQUEST:

```
<? xml version = "1.0" encoding = "UTF-8"?>
<COMMAND>
  <TYPE> OMPREQ </TYPE>
  <customer_msisdn> 75612222 </customer_msisdn>
  <merchant_msisdn> 55614950 </merchant_msisdn>
  <api_username> AMTEST </api_username>
  <api_password> Att @ 3751 </api_password> <amount>
  5000 </amount>
  <PROVIDER> 101 </PROVIDER>
  <PROVIDER2> 101 </PROVIDER2>
  <PAYID> 12 </PAYID>
  <PAYID2> 12 </PAYID2>
  <otp> 541847 </otp>
  <reference_number> 789233 </reference_number>
  <ext_txn_id> 201500068544 </ext_txn_id> </COMMAND>
```

### Description:

```
<COMMAND>
  <TYPE> OMPREQ </TYPE> fixed value<customer_msisdn> 75612222 </customer_msisdn>
  Number of the customer making the payment, retrieved from the web page
```



## Error codes

### 1. Success: 200

### 2. The error codes of the failure cases are in the table below:

Sr. No.	Error Coded	Description
1	08	Transaction amount is not correct while doing the transaction. It will be sent in case when any Merchant payment has to be made against a fix voucher number.
2	00042	Requested amount is not in multiple of configured value. For eg if multiple of is defined as 5 system will accept transaction amount as 5,10,15 etc.
3	00043	The amount by which transaction is initiated is not configured in the system.
4	00075	You are not allowed to access the service
5	84	Service charge is not defined, It can be consider as configuration problem
6	00084	Service charge is not defined, It can be consider as configuration problem
7	00186	Request initiator is not found
8	409	Transaction amount is less than the defined minimum value.
9	00409	Transaction amount is less than the defined minimum value.
10	410	Transaction amount is more than the allowed value.
11	00410	Transaction amount is more than the allowed value.
12	440	Nick name length is more than the allowed limit
13	450	No Special character like "# \$% # @ \$" are not allowed in nickname.
14	916	Received a error response from Bank while doing any Bank transaction.
15	01009	There is an error response from Merchant
16	1032	There is a problem with PreTUPS while making connection for EVD request.
17	01032	There is a problem in service so we can configure a generic message
18	01035	There is a problem in service so we can configure a generic message
19	01056	Re-imburement of a user has been rejected.
20	1703	Account number for the service is rejected.
21	02117	User account is locked, It can be unlock by CCE
22	3073	During change nick name service; there is a problem while entering a nick name.
23	3078	Nick name is in use, so user cannot use same nick name.
24	5001	Transfer Rule is not defined, It can be consider as transfer is not allowed between two parties.
25	9035	Account number for the service is rejected.
26	09988	There is a problem while doing transaction with Merchant
27	11007	There is a problem while doing transaction with Merchant
28	11007	There is a problem while doing transaction with Merchant
29	60011	Threshold count for Payer reached for the day.
30	60011	Sender has reached your maximum count of transactions for the day.
31	60012	Sender has reached your maximum count of transactions for the week.
32	60013	Maximum count of transaction per month for pay reached
33	60014	Sender has reached your maximum transaction amount for the day.
34	60015	Sender has reached your maximum of transaction amount for the week.
35	60016	Sender has reached your maximum of transaction amount for the month.
36	60019	Pay Minimum balance limit is reached.
37	60019	Sender has insufficient funds. 5 successive invalid transfers will lock your wallet. Call 222 to locate an agent.
38	60021	Receiver has reached the maximum count of transactions for the day.
39	60022	Receiver has reached the maximum count of transactions for the week.
40	60023	Receiver has reached the maximum count of transactions for the month.
41	60024	Receiver has reached the maximum receiving amount for the day.
42	60025	Receiver has reached the maximum receiving amount for the week.
43	60026	Transaction Maximum amount reached for month
44	60026	Receiver has reached the maximum receiving amount for the month.

45	60030	Receiver has reached their maximum balance limit and so cannot receive your transfer. Thank you.
46	60041	Requested amount is exceeding the daily limit.
47	90001	Transaction not allowed
48	99034	Service charge is not defined, It can be consider as configuration problem
49	99039	Self transfer is not allowed within bank account
50	99040	Self transfer is not allowed with in wallet
51	99046	Transaction amount is less than defined for selected pay.
52	99046	Transaction amount is less than the minimum threshold limit
53	99047	Transaction amount is more than the minimum threshold limit
54	99987	Service is not accessible
55	99990	User is try to do the transaction more than the available balance
56	99992	Transaction amount is less than the minimum allowed value
57	99993	Receiver maximum transaction amount limit reached
58	99993	Amount is more than the allowed value
59	99996	User wallet is suspended, user cannot do the transaction
60	100004	Amount is more the sender transaction amount
61	0100004	The amount you entered is more than the maximum amount allowed for this service. Please Thank you.
62	0100005	The amount you entered is more than the maximum amount allowed for the recipient. Please Thank you.
63	0100012	You have reached your maximum count of transactions for the day.
64	0100013	The recipient has reached the maximum count of transactions for the day.
65	0100014	You have reached your maximum count of transactions for the week.
66	0100015	The recipient has reached the maximum count of transactions for the week.
67	100016	Maximum all bearer count of transaction per month for pay reached
68	0100016	You have reached your maximum count of transactions for the month.
69	0100017	The recipient has reached the maximum count of transactions for the month.
70	0100024	You have reached your maximum transaction amount for the day.
71	0100025	The recipient has reached the maximum receiving amount for the day.
72	0100026	You have reached your maximum of transaction amount for the week.
73	0100027	The recipient has reached the maximum receiving amount for the week.
74	100028	Maximum all bearer amount of transaction per month for pay reached
75	100029	Maximum all bearer amount of transaction per month for payee reached
76	0100029	The recipient has reached the maximum receiving amount for the month.
77	0100048	Payee maximum allowed balance limit for cumulative control profile reached
79	111333	While accessing Monthly summary month name is wrongly entered
80	990413	While access OTP service retailer enter wrong OTP while cash out
81	990416	While access OTP service retailer enter wrong OTP while cash out
82	990417	While access OTP service retailer enter OTP which is not exist
83	990418	While access OTP service retailer enter OTP which is already consumed
84	990422	MSISDN Entered is invalid